

GRAB JOHN®

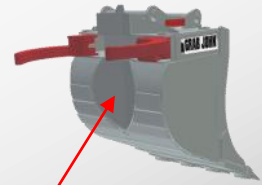
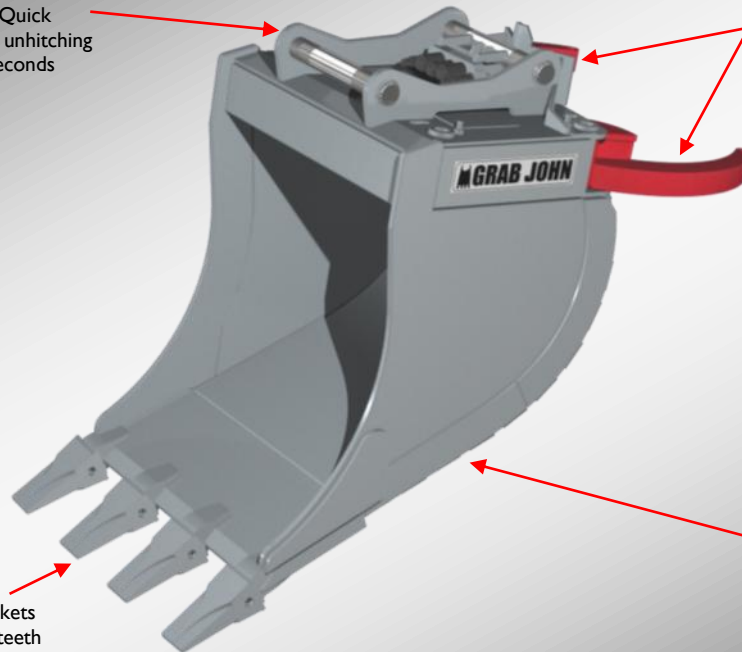
The multi purpose bucket with retractable claws

Grab John

Multi purpose
buckets

Attachment bracket with OilQuick function enables hitching and unhitching of the Grab John bucket in seconds directly from the cab.

The hydraulic grab claws gives Grab John its unique "thumb grip"

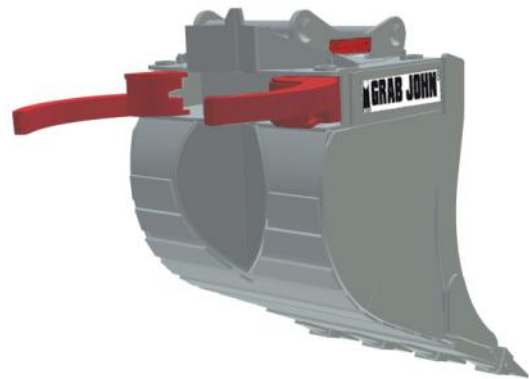


V-shaped steering guide provides optimal steering and support for pipes or other oblong objects

High-grade digging bucket

Grab John multi purpose buckets can be equipped with either teeth or a plain bucket blade.

Grab John - the multi purpose bucket with a "thumb grip"



Grab John multi purpose buckets are fully normal digging buckets that are equipped with retractable grab claws. The buckets have a hydraulic "thumb grip" for all sorts of grab and lifting jobs around your excavator. Grab John replaces your standard bucket.

The grab claws do not disturb the normal digging in any way when retracted.

Advantages with Grab John

- Robust digging bucket which is designed for efficient digging. With the grab claws retracted, the digging is not disturbed.
- Efficient handling, 15-50% increased efficiency compared to conventional methods.
- Increased security and controlled lifting, no manual attachment of lifting straps and chains.
- Integrated check valves for maximum security. The valves are equipped with a shock function which protects the grab claws against overload.

GRAB JOHN®

Grab John

Multi purpose
buckets

The multi purpose bucket with retractable claws

Replace your standard bucket with a Grab John multi purpose bucket and you will have a useful "thumb grip" on your excavator!



Technical data	GJ 275	GJ 2	GJ 4	GJ 600	GJ 700	GJ 7	GJ 8
Width	700 mm	750 mm	850 mm	850 mm	950 mm	1050 mm	1050 mm
Volume	275 L	300 L	500 L	600 L	700 L	900 L	1050 L
Bucket weight	310 kg	415 kg	750 kg	780 kg	890 kg	1170 kg	1250 kg
Max. clearance between grab claws	580 mm	630 mm	750 mm	750 mm	700 mm	800 mm	800 mm
Length of steering guide groove incl. support on mounting plate	600 mm	600 mm	750 mm	750 mm	800 mm	850 mm	900 mm
Hydraulic cylinder dimensions	80/40*120 mm	80/40*120 mm	100/50*160 mm	100/50*160 mm	100/50*160 mm	110/50*175 mm	110/50*175 mm
Clamping force at claw tip at 180 bar	6770 kp	6770 kp	10 600 kp	10 600 kp	10 600 kp	13 560 kp	13 560 kp
Hydraulic hoses	SAE R2 AT 3/8"	SAE R2 AT 3/8"	SAE R2 AT 3/8"	SAE R2 AT 3/8"	SAE R2 AT 3/8"	SAE R2 AT 3/8"	SAE R2 AT 3/8"
Quick couplings	Tema 1/2"	Tema 1/2"	Tema 1/2"	Tema 1/2"	Tema 1/2"	Tema 1/2"	Tema 1/2"
Suitable for excavators in the size of	< 10 ton	< 12 ton	12 - 18 ton	12 - 18 ton	16 - 20 ton	18 - 28 ton	25 - 32 ton
Type of teeth/amount	CATEX 2 / 4	CATEX 2 / 4	TOBA 5 / 4	TOBA 5 / 4	TOBA 5 / 4	HP 9J - 4351 / 4	HP 9J - 4351 / 4

Specifications subject to change without notice.

Manufacturer:

OilQuick AB
Box 1055
824 12 Hudiksvall
Sweden

Tel. +46 650 - 153 40
Fax. +46 650 - 148 84

information@oilquick.com
www.oilquick.com

Distributor: