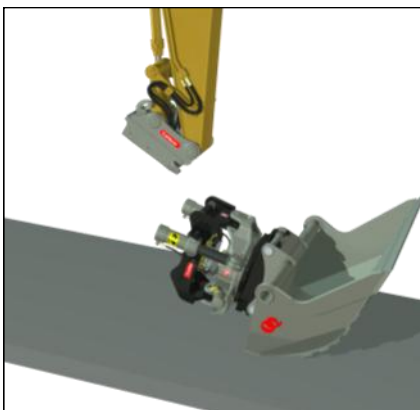
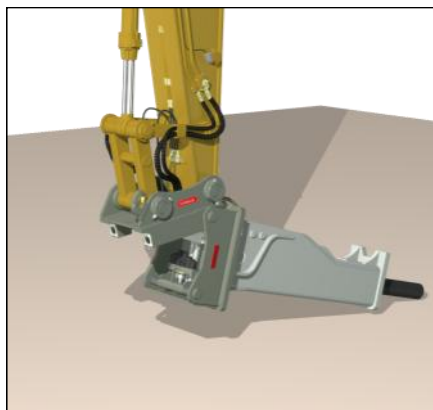


Change hydraulic attachments in ten seconds!

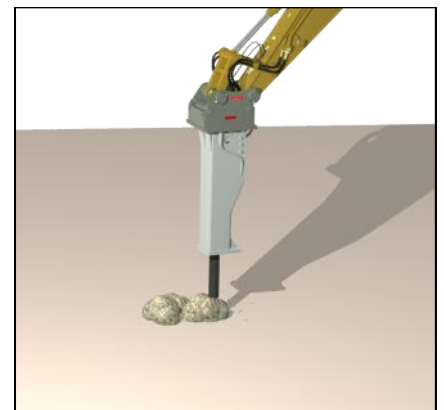
One,



Two,



Go!



All the tools can be changed without leaving the cab

The OilQuick quick couplers OQ 65 and OQ 70 are hydraulic hitches with integrated quick coupler function for electric and hydraulic lines. Suitable for use with excavators and backhoe loaders from 12 to 28 tons, the quick coupler enables hydraulic attachments to be changed automatically from inside the cab.

OilQuick features:

- Fast tool change
- The right tool always ready for the job
- Operator can stay in cab
- Hose couplings without play
- Dirt guard
- Higher competitiveness
- Higher productivity
- Higher cost effectiveness

**The right tool always ready
for the job**


ALLU sorting bucket



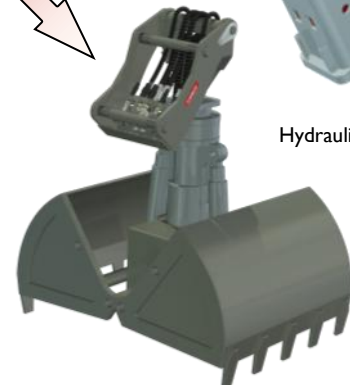
Hydraulic hammer



OilQuick digging bucket



OilQuick tiltrotator



Clamshell bucket with rotator



Quick coupler



Bucket frame



Hammer/adaptor plate



Hanging tool adapter



Hydraulic tool frame



Special adapter

Quick coupler	OQ 65	OQ 70
Weight	170 kg	210 kg
Width	440 mm	450 mm
Pin diameter	65 mm	70 mm
Distance between pins	530 mm	600 mm
Min/max locking pressure	25/35 MPa	25/35 MPa
Working pressure in hydraulic system	35 MPa	35 MPa
2 hose break valves	Yes	Yes
Max. number of hose couplings	2x1/2"+3x3/4"	2x1/2"+1x3/4"+2x1"
Available with elec. connection, 10-pole	Yes	Yes
Suitable for excavator	12 - 22 t	15 - 28 t

Components	OQ 65	OQ 70
Bucket frame	65 kg	85 kg
Hammer/adaptor plate	240 kg	315 kg
Hanging tool adapter	205 kg	258 kg
Hydraulic tool frame	75 kg	95 kg
Special adapter for sorting bucket	145 kg	170 kg
The weights given are approximate and may deviate depending on the attachments used.		

 OilQuick is patented.
Specifications subject to change without notice.

Manufacturer:
OilQuick AB
 Box 1055
 824 12 Hudiksvall
 Sweden

 Tel. +46 650 - 153 40
 Fax. +46 650 - 148 84

 information@oilquick.com
 www.oilquick.com

Distributor: