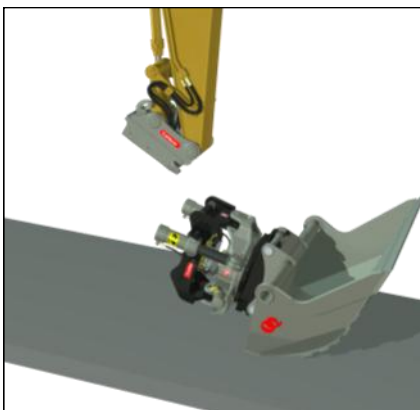
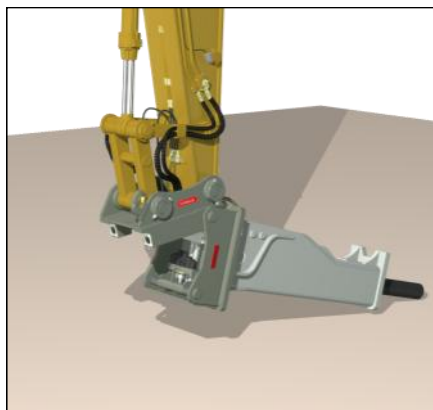


Change hydraulic attachments in ten seconds!

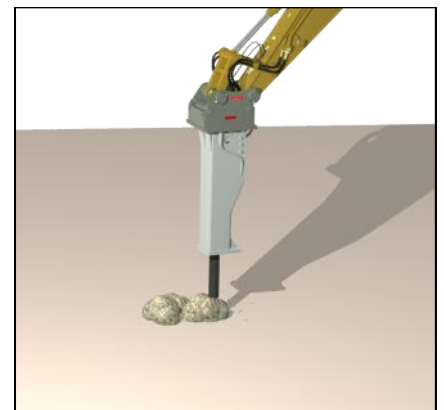
One,



Two,



Go!



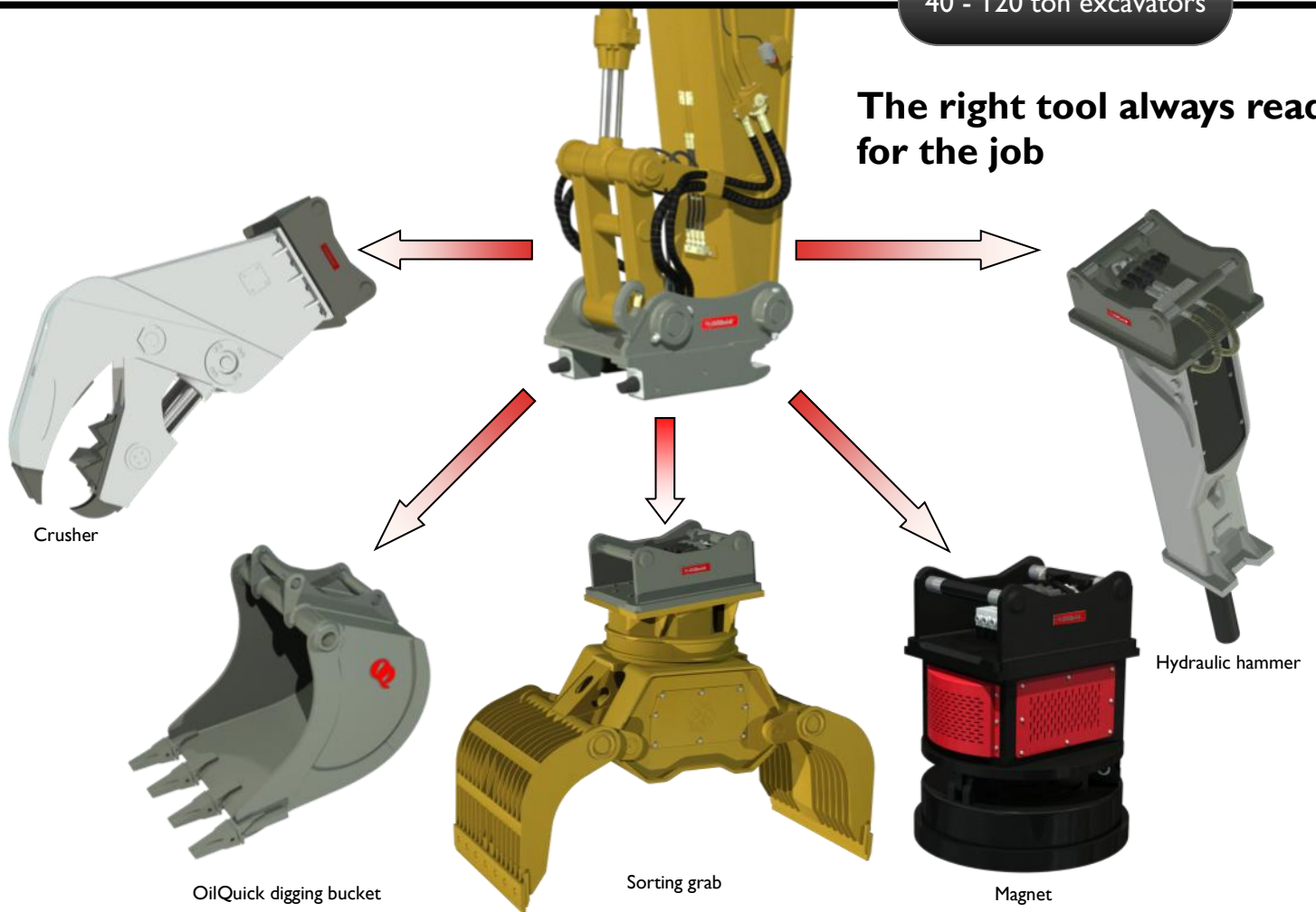
All the tools can be changed without leaving the cab

The OilQuick quick couplers OQ 90 and OQ 120 are hydraulic hitches with integrated quick coupler function for electric and hydraulic lines. Suitable for use with excavators and backhoe loaders from 40 to 120 tons, the quick coupler enables hydraulic attachments to be changed automatically from inside the cab.

OilQuick features:

- Fast tool change
- The right tool always ready for the job
- Operator can stay in cab
- Hose couplings without play
- Dirt guard
- Higher competitiveness
- Higher productivity
- Higher cost effectiveness

The right tool always ready for the job



Quick coupler



Bucket frame



Hammer/adaptor plate



Hydraulic tool frame

Quick coupler	OQ 90	OQ 120
Weight	630 kg	1200 kg
Width	750 mm	870 mm
Pin diameter	90 mm	120 mm
Distance between pins	750 mm	1000 mm
Min/max locking pressure	25/35MPa	25/35MPa
Working pressure in hydraulic system	35 MPa	35 MPa
2 hose break valves	Yes	Ja
Max. number of hose couplings	3x1/2"+1x3/4"+4x1"	3x1/2"+3x1"+2x1 1/2"
Available with elec. connection, 10-pole	Yes	Ja
Suitable for excavator	40 - 70 t	70 - 120 ton

Components	OQ 90	OQ 120
Bucket frame	230 kg	600 kg
Hammer/adaptor plate	620 kg	1100 kg
Hydraulic tool frame	250 kg	1100 kg

The weights given are approximate and may deviate depending on the attachments used.

OilQuick is patented.
 Specifications subject to change without notice.

Manufacturer:

OilQuick AB
 Box 1055
 824 12 Hudiksvall
 Sweden

Tel. +46 650 - 153 40
 Fax. +46 650 - 148 84

information@oilquick.com
 www.oilquick.com

Distributor: