



THE SMART QUICK
COUPLER SYSTEM FOR
MATERIAL HANDLERS

A detailed close-up of an Oilquick hydraulic coupler system mounted on a machine arm. The system is black and silver, with multiple hydraulic hoses and a red 'OILQUICK' label. The background shows a hazy, industrial landscape with mountains.

**IMPROVE
YOUR
MACHINE
BE BETTER**

CHANGE HYDRAULIC ATTACHMENTS IN 15 SECONDS!

Developed by OilQuick, the OQC system provides unique advantages for contractors in material handling.

The OQC is an OilQuick pendulum quick coupler, which is primarily designed for use on loading cranes and other handling equipment.

Basically, the system consists of an extremely rugged 360° rotator mounted on our fully hydraulic, tried-and-tested quick coupler. The OQC unit is suspended from the handling equipment's stick.

Electric slip ring comes as standard, which allows the use of a magnetic plate.





THE QUICK COUPLER FOR PENDULUM ATTACHMENTS DESIGNED FOR THE FUTURE!

FAST AND EFFICIENT

The OilQuick quick coupler system enables the operator to change quickly between various mechanical and hydraulic work tools without leaving the cab. As a result, he has the right tool for the job in every situation and can work faster and more efficiently.

IMPROVED WORKING CONDITIONS

OilQuick puts an end to the need for getting out of the cab in order to attach hydraulic and electrical tools. This reduces the risk of accidents for operators and means they do not have the nuisance of handling oily couplings.

MORE COST EFFECTIVE

Fast tool change and efficient use of the handling equipment help to increase productivity. Experience in the field has shown that investing in an OilQuick quick coupler

pays off whenever attachments need to be changed a few times every working day.

QUICK COUPLER WITHOUT PLAY

Made of high-grade steel, OilQuick quick couplers and tool adapters are of the highest quality and comply with the latest manufacturing standards. The coupler locks the tools in place by continuously applying full system pressure. This ensures engagement with no play, resulting in minimum wear and long service life for the coupler system.

SECURE QUICK COUPLER SYSTEM

OilQuick offers safe and secure quick coupler systems with double hose rupture valves and a system for continuous hydraulic loading of the lock cylinders. The locking is operated via a pressure panel.

- » Over 25 years' experience with fully automatic quick coupler systems.
- » Maximum cost efficiency and flexibility - being able to use the right attachment makes the machine a versatile tool carrier. This enables capacity utilisation to be maximised and process flows optimised.
- » Customised applications - wide range of work tools available, with the option of using special/custom attachments.
- » Secure connection within seconds - simple and safe changing of hydraulic, mechanical and electrical work tools from the operator's cab.
- » Quick couplers from OilQuick - have proven their worth on job sites thousands of times.
- » Integrated electric slip ring - lifting magnets can be used without additional cables having to be connected manually from the machine to the magnet.
- » Maximum flexibility - 360° continuous rotation for all work tools with heavy-duty motor.
- » Comes with OQLS, our user-friendly operator support for safe and secure tool changes.



 OILQUICK®

 OILQUICK®

OQC 65

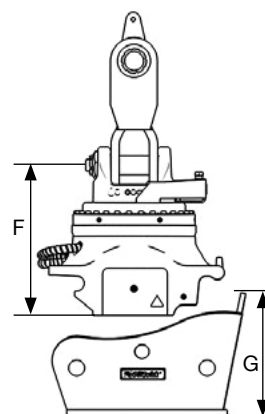
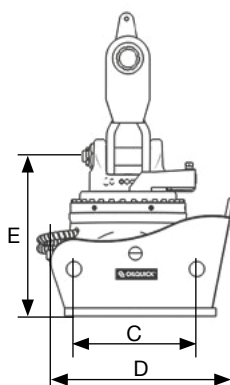
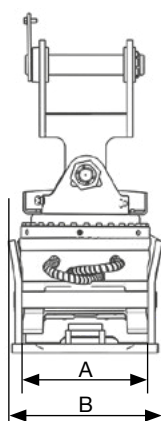
The OQC is an OilQuick suspended quick coupler, which is primarily designed for use on loading cranes and other handling equipment with lifting capacity up to 20 tons.



TECHNICAL DATA OQC 65

Max. no. of couplings		Electrical couplings		Max. operating pressure	Rotation max. working pressure
1"	3/4"	High power	Control power 24 V, 10 pole		
-	3	Option	Option	350 bar	250 bar

Weight without grapple suspension. Subject to change without notice.



Rotator	Weight			Max. lift capacity	Dimensions (mm)						
	Coupler	Rotator	Adapter		A	B	C	D	E	F	G
XR400	225 kg	250 kg	213 kg	20 t	441	602	530	802	690	635	504

OQC 70/55

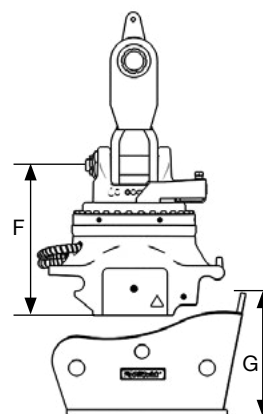
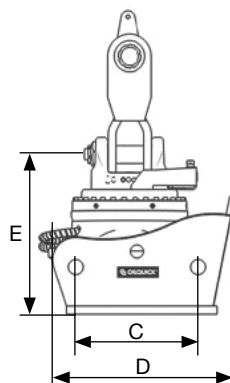
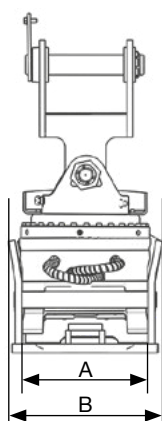
The OQC is an OilQuick suspended quick coupler, which is primarily designed for use on loading cranes and other handling equipment with lifting capacity up to 30 tons.



TECHNICAL DATA OQC 70/55

Max. no. of couplings		Electrical couplings		Max. operating pressure	Rotation max. working pressure
1"	3/4"	High power	Control power 24 V, 10 pole		
2	1	Option	Option	350 bar	250 bar

Weight without grapple suspension. Subject to change without notice.



Rotator	Weight		Max. lift capacity	Dimensions (mm)							
	Coupler	Rotator		Adapter	A	B	C	D	E	F	G
XR600	370 kg	320 kg	344 kg	30 t	551	754	600	932	750	697	631

OQC 90

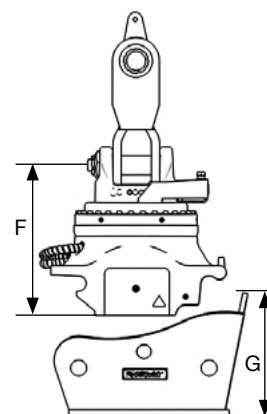
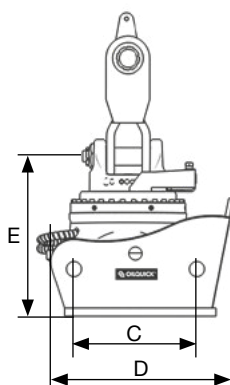
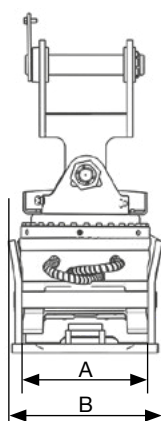
The OQC is an OilQuick suspended quick coupler, which is primarily designed for use on loading cranes and other handling equipment with lifting capacity up to 68 tons.



TECHNICAL DATA OQC 90

Max. no. of couplings		Electrical couplings		Max. operating pressure
1"	3/4"	High power	Control power 24 V, 10 pole	
4	-	Option	Option	345 bar

Weight without grapple suspension. Subject to change without notice.



Rotator	Weight			Max. lift capacity	Dimensions (mm)						
	Coupler	Rotator	Adapter		A	B	C	D	E	F	G
RT1204	673 kg	717 kg	955 kg	54 t	751	1022	750	1214	1516	1343	818
RT1504	673 kg	873 kg	955 kg	68 t	751	1022	750	1214	1485	1312	818

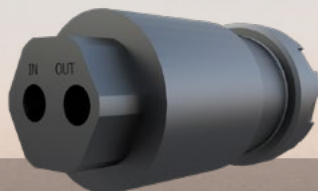
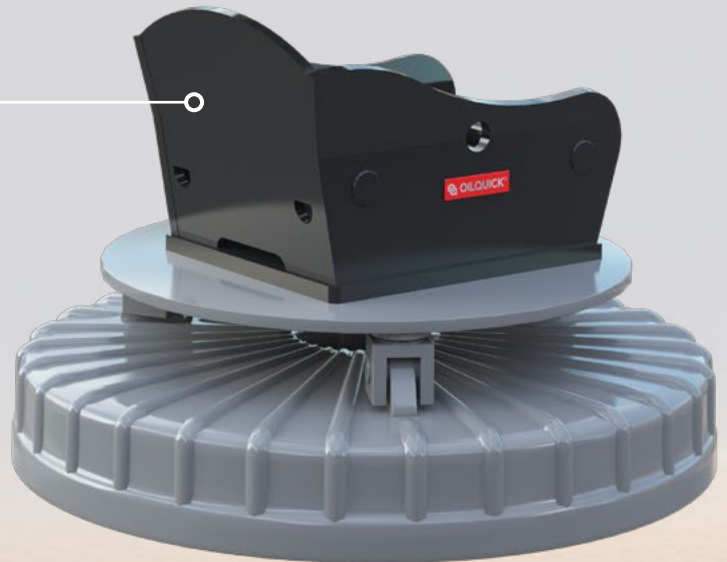
PRODUCT DESCRIPTION



Quick coupler with rotator.



Hydraulic adapter with coupling ramp.



LUBRICATION CONNECTOR

A connector developed to handle lubrication of attachments in the best possible way.

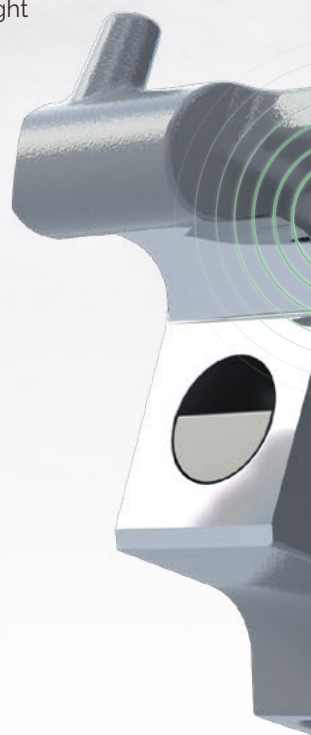
The unique thing is that the coupling has a built-in return for the grease, so when you disconnect a lubricated tool, it turns the grease in return so that the overflow valve is not activated.

SAFE TOOL CHANGE WITH THE OQ-LOCKSUPPORT

OilQuick LockSupport (OQLS) is a newly developed, user-friendly driver support for safe and secure attachment switching on excavators. OQLS is available for all nine sizes of OilQuick fully automatic quick couplers.

Nowadays modern excavators are equipped with hydraulic quick couplers and use a number of buckets and attachments, which in many cases are switched several times per hour and day. There is always an element of risk when switching buckets and attachments. Dropped and swinging buckets can accidentally cause either severe personal injury or death.

The reason for dropped buckets in most cases is driver-related and can depend on many factors including work stress, non standardised lock manoeuvring (buttons and controls with different functions, different placement from machine to machine), difficulty in determining whether the attachment is aligned correctly and uncertainty in the position of the locking bolts. OQLS solves all these problems and gives the operator safe and secure support for the right decisions when switching buckets and attachments.

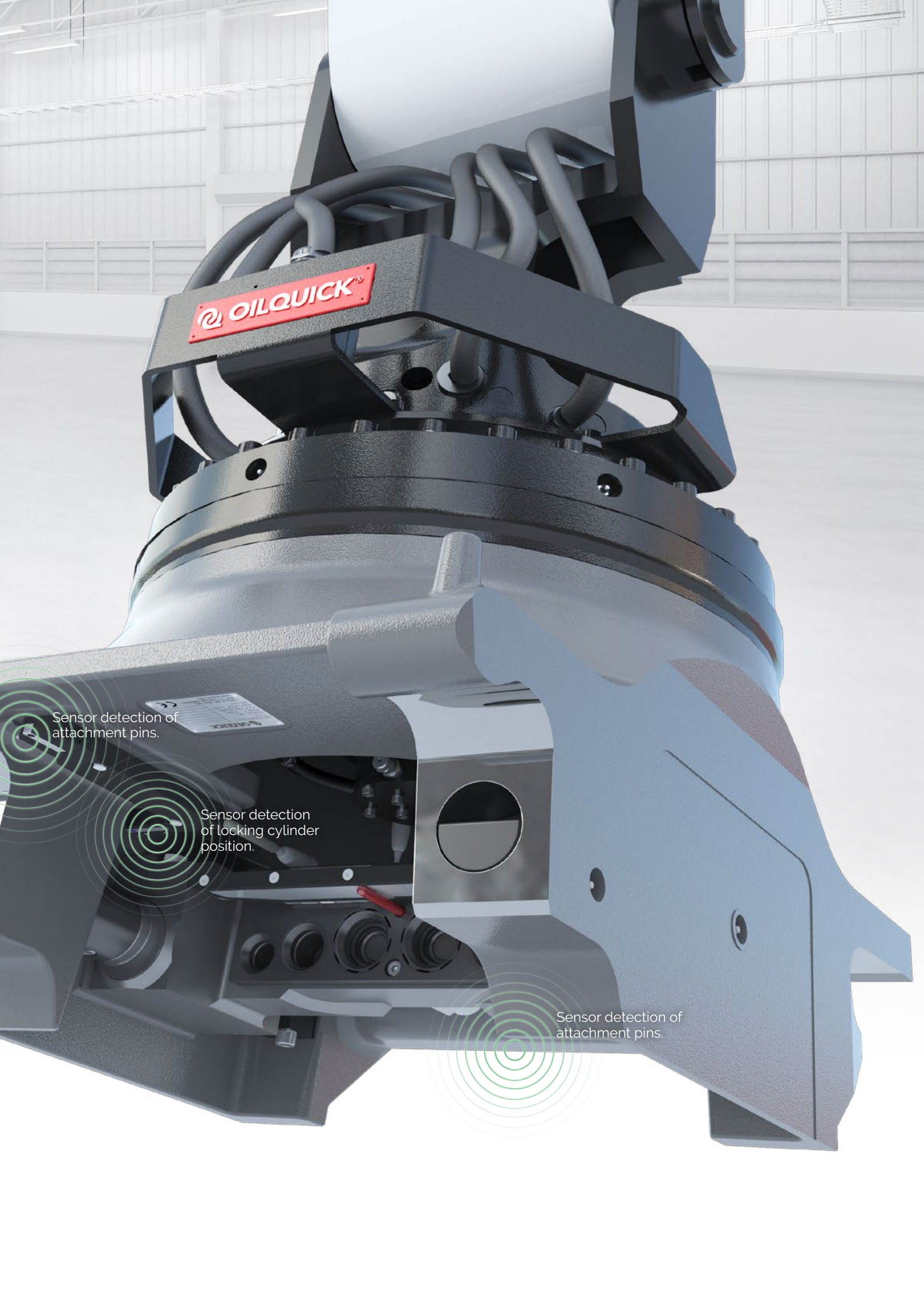


OQLS PROVIDES THE FOLLOWING BENEFITS:

- » Mindful, controlled connection process.
- » Sensor detection of attachment pins and locking cylinder position.
- » Automatic activation of the machine's hydraulics.
- » The system logs all events as well as the last 32 events in chronological order.

DC2 / OQCS-4

OQLS operated with supplied display.



OILQUICK

Sensor detection of attachment pins.

Sensor detection of locking cylinder position.

Sensor detection of attachment pins.

